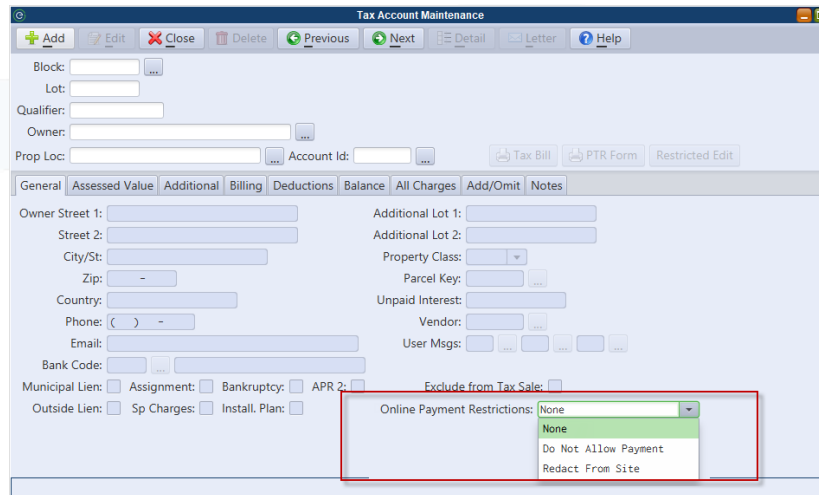


## Daniel's Law Enhancements

The ability to redact accounts from displaying on WIPP has been added to MCSJ. The "Do Not Accept Online Payments" checkbox has been updated to an "Online Payment Restrictions" combo box with the following choices: None, Do Not Allow Payment, and Redact from Site

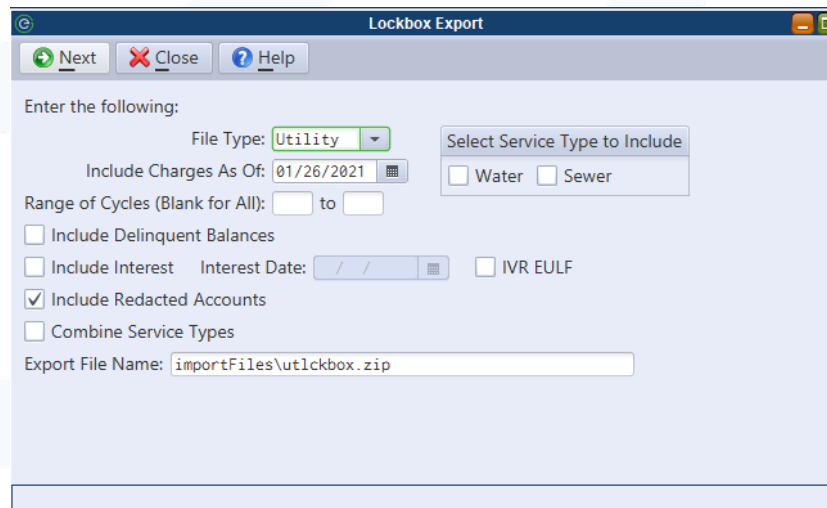
- None = Will display and allow payments on WIPP
- Do Not Allow Payment = Will display on WIPP but not allow payments
- Redact from Site = Will not display or allow payments on WIPP



The screenshot shows the 'Tax Account Maintenance' window. The 'Online Payment Restrictions' dropdown menu is open, showing three options: 'None', 'Do Not Allow Payment', and 'Redact From Site'. The 'None' option is currently selected.

## Lockbox Export

A default option was added to "Include Redacted Accounts." If deselected, the export will skip any accounts set to "Redact From Site."

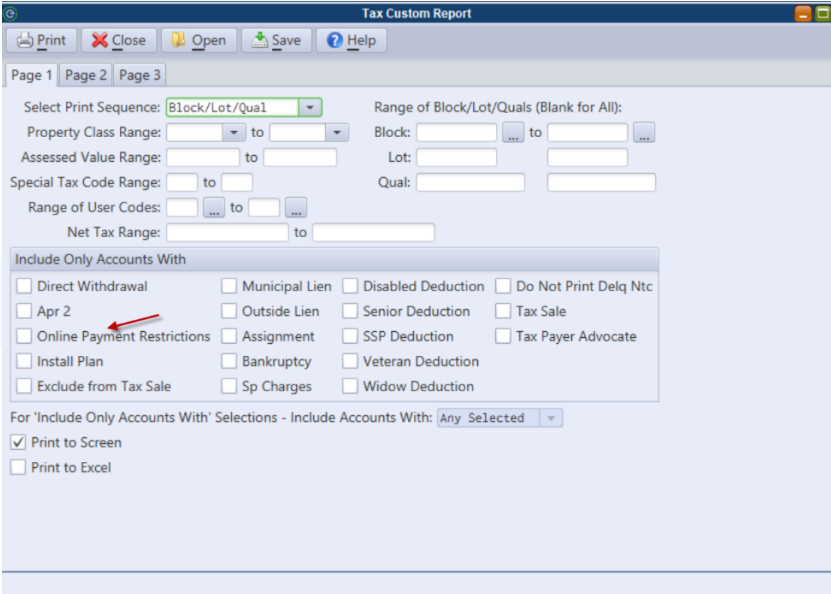


The screenshot shows the 'Lockbox Export' window. The 'Include Redacted Accounts' checkbox is checked. Other visible options include 'File Type: Utility', 'Include Charges As Of: 01/26/2021', 'Range of Cycles (Blank for All):' with empty fields, 'Include Delinquent Balances', 'Include Interest', 'Interest Date: / /', 'Include IVR EULF', 'Combine Service Types', and 'Export File Name: importFiles\utlckbox.zip'.

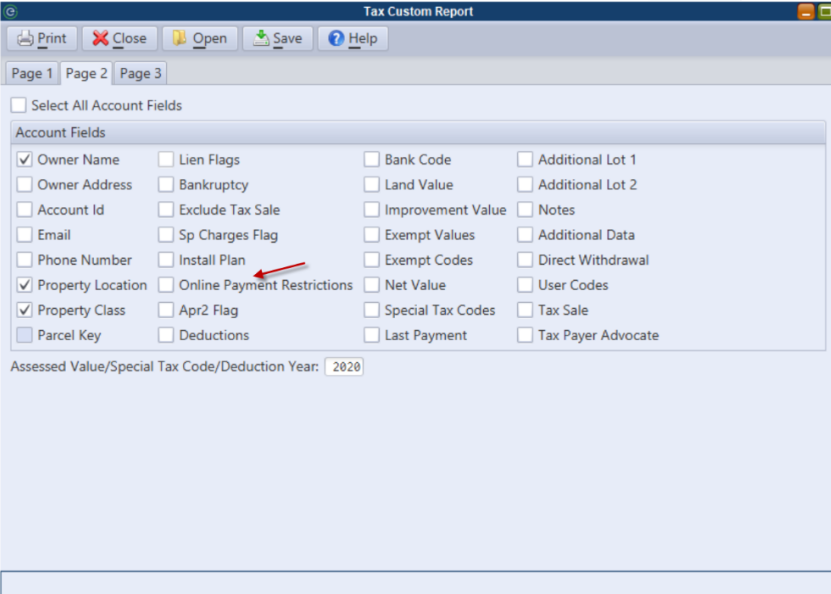
*NOTE: For IVR files that are generated automatically at night, redacted accounts will be included. Since IVR is for phone payments there is no way to search by name or address.*

### Tax Custom Reports

The 'Include Only Accounts With' section now displays the new "Online Payment Restriction" option. When this option is selected, the report will include accounts with "Redact from Site" or "Do Not Allow Payment."



Page 2 labels have also been updated to reflect the new field name.



### Change Transaction Inquiry

Changed to match new label on maintenance.

